

Cosmopolite Scene

Sound Specs

FOH Speakers	
8	PA: d&b AL09
4	Front Fills: d&b Y7P
6	Sub: d&b V-GSUB
2	Sub: d&b B2
4	Galleri fills: d&b: Max 12
FOH Speakers AMP	
5	d&b D12 - Stereo amps for C7 og B2 speakers
2	d&b E-pac - amps for the front fills
FOH Mixer	
	Midas Heritage HD96-24
	I/O DL251 48/16
FOH FX Rack	
1	Bricasti M7 Reverb
1	Lexicon PCM92 Reverb
1	Yamaha SPX FX Processor
Monitor Speakers	
10	d&b MAX
1	JBL EON - activ monitors
Monitor Amps	
3	CROWN XLS 802 - stereo amps 500W@80hm/800W@4ohm
2	LAB GRUPPEN IPX 2400 - stereo amps
Analog multi	
16	in-puts
8	Out-puts
Monitor console	
	Midas Pro 2C
Stage Rack	
1	DL 251 48/16
Split Rack	
5	Klark Teknik Square One Splitter - provides a total of 40 split channels

Light Specs	
	FOH Console
1	MA grandMA3 compact
	Lamps
	Dimmes
2	Source Foure Profil 15°/30° 750w
4	Selecon SPX Profil 26° 800w
8	Selecon Rama 150 fresnel 1000w
6	Par 64 1000w
	LEDs
6	Spotlight Profile LED 200w, Hyperion 25°/50°, 6C, 7ch mode
6	Spotlight Profile LED 200w, Hyperion 15°/30°, 6C, 7ch mode
8	Spotlight PC LED 200w, Hyperion WW, 1ch mode
4	Martin Mac Aura XB, 14ch mode
30	Luxibel Bpar 180 rgbw v2, 8ch mode
23	Martin Rush Par 1 rgbw, 5ch mode
6	Active Sunstrips, 10ch mode
2	Elation Fuze Profile 305W Full Spectrum RGBMA
	Hazers
1	Martin, JEM K1 HAZER
1	Martin, JEM Compact Hazer Pro
	Bubbles
1	Antari B-100 Bubble Machine
	Rigg
1	Front Truss: 10,5m long. Pq 300kg, Pl 100kg
1	1 Square rig above the stage: 6m x 5,7m. Pq 600kg, Pl 100kg

Cosmopolite scene

Lightplot March 2025

Rigging

- Supporting point
(electric chain hoist)
- p1, p2 - Pq 400kg
- PL 200kg
- p3, p4 - Pq 600kg
- p5, p6 PL 150kg

Technical room

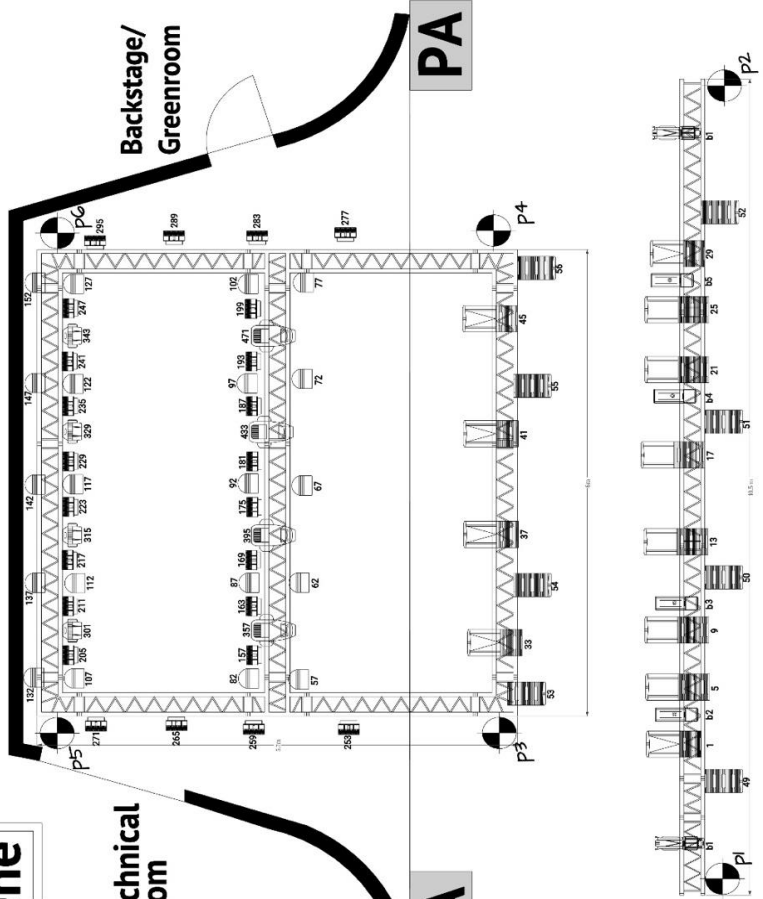
Backstage/
Greenroom

PA

PA

Legend

- 6pcs Spotlight Profile LED 200W
- 6pcs Spotlight Profile LED 200W Hyperion 25750, 6C, 4ch mode
- 8pcs Spotlight Profile LED 200W Hyperion 15750, 6C, 4ch mode
- 4pcs Spotlight PC LED 200W Hyperion WW, 1ch mode
- 30pcs MAC AURA XB, 14ch mode
- 23pcs Luxibel Bpar 180 rgbw v2, 6ch mode
- 4pcs RUSH PAR 1 RGBW 5Ch Mode
- 2pcs Elation Fuse Proigile, RGBMA 38 mode
- 4pcs Source Foure Profil 15750 750W
- 4pcs Selecon SPX Profil 26' 800W
- 6pcs Active Sunstrip, 10ch mode
- 1pcs JEM Compact Hazer Pro



Light Patchliste

Adress	Lamp
b1	Source Foure Profile 15/30 750W
b2	Slelecon SPX Profile 20° 800W
b3	Slelecon SPX Profile 20° 800W
b4	Slelecon SPX Profile 20° 800W
b5	Slelecon SPX Profile 20° 800W
1	Spotlight Profile LED 200W, Hyperion 25/50, 6C, 4ch mode
5	Spotlight Profile LED 200W, Hyperion 15/30, 6C, 4ch mode
9	Spotlight Profile LED 200W, Hyperion 15/30, 6C, 4ch mode
13	Spotlight Profile LED 200W, Hyperion 15/30, 6C, 4ch mode
17	Spotlight Profile LED 200W, Hyperion 15/30, 6C, 4ch mode
21	Spotlight Profile LED 200W, Hyperion 15/30, 6C, 4ch mode
25	Spotlight Profile LED 200W, Hyperion 15/30, 6C, 4ch mode
29	Spotlight Profile LED 200W, Hyperion 25/50, 6C, 4ch mode
33	Spotlight Profile LED 200W, Hyperion 25/50, 6C, 4ch mode
37	Spotlight Profile LED 200W, Hyperion 25/50, 6C, 4ch mode
41	Spotlight Profile LED 200W, Hyperion 25/50, 6C, 4ch mode
45	Spotlight Profile LED 200W, Hyperion 25/50, 6C, 4ch mode
49	Spotlight PC LED 200W, Hyperion WW, 1ch mode
50	Spotlight PC LED 200W, Hyperion WW, 1ch mode
51	Spotlight PC LED 200W, Hyperion WW, 1ch mode
52	Spotlight PC LED 200W, Hyperion WW, 1ch mode
53	Spotlight PC LED 200W, Hyperion WW, 1ch mode
54	Spotlight PC LED 200W, Hyperion WW, 1ch mode
55	Spotlight PC LED 200W, Hyperion WW, 1ch mode
56	Spotlight PC LED 200W, Hyperion WW, 1ch mode
57	RUSH PAR 1 RGBW, 5ch mode
62	RUSH PAR 1 RGBW, 5ch mode
67	RUSH PAR 1 RGBW, 5ch mode
72	RUSH PAR 1 RGBW, 5ch mode
77	RUSH PAR 1 RGBW, 5ch mode
82	RUSH PAR 1 RGBW, 5ch mode
87	RUSH PAR 1 RGBW, 5ch mode
92	RUSH PAR 1 RGBW, 5ch mode
97	RUSH PAR 1 RGBW, 5ch mode
102	RUSH PAR 1 RGBW, 5ch mode
107	RUSH PAR 1 RGBW, 5ch mode
112	RUSH PAR 1 RGBW, 5ch mode
117	RUSH PAR 1 RGBW, 5ch mode
122	RUSH PAR 1 RGBW, 5ch mode
127	RUSH PAR 1 RGBW, 5ch mode
132	RUSH PAR 1 RGBW, 5ch mode

137	RUSH PAR 1 RGBW, 5ch mode
124	RUSH PAR 1 RGBW, 5ch mode
147	RUSH PAR 1 RGBW, 5ch mode
152	RUSH PAR 1 RGBW, 5ch mode
157	Luxibel Bpar 180 RGBW v2, 6ch mode
163	Luxibel Bpar 180 RGBW v2, 6ch mode
169	Luxibel Bpar 180 RGBW v2, 6ch mode
175	Luxibel Bpar 180 RGBW v2, 6ch mode
181	Luxibel Bpar 180 RGBW v2, 6ch mode
187	Luxibel Bpar 180 RGBW v2, 6ch mode
193	Luxibel Bpar 180 RGBW v2, 6ch mode
199	Luxibel Bpar 180 RGBW v2, 6ch mode
205	Luxibel Bpar 180 RGBW v2, 6ch mode
211	Luxibel Bpar 180 RGBW v2, 6ch mode
217	Luxibel Bpar 180 RGBW v2, 6ch mode
223	Luxibel Bpar 180 RGBW v2, 6ch mode
229	Luxibel Bpar 180 RGBW v2, 6ch mode
235	Luxibel Bpar 180 RGBW v2, 6ch mode
241	Luxibel Bpar 180 RGBW v2, 6ch mode
247	Luxibel Bpar 180 RGBW v2, 6ch mode
253	Luxibel Bpar 180 RGBW v2, 6ch mode
259	Luxibel Bpar 180 RGBW v2, 6ch mode
265	Luxibel Bpar 180 RGBW v2, 6ch mode
271	Luxibel Bpar 180 RGBW v2, 6ch mode
277	Luxibel Bpar 180 RGBW v2, 6ch mode
283	Luxibel Bpar 180 RGBW v2, 6ch mode
289	Luxibel Bpar 180 RGBW v2, 6ch mode
295	Luxibel Bpar 180 RGBW v2, 6ch mode
301	MAC AURA XB, 14ch mode
315	MAC AURA XB, 14ch mode
329	MAC AURA XB, 14ch mode
343	MAC AURA XB, 14ch mode
357	Elation Fuse Profile, RGBMA 38 mode
395	Elation Fuse Profile, RGBMA 38 mode
433	Elation Fuse Profile, RGBMA 38 mode
471	Elation Fuse Profile, RGBMA 38 mode

AV Specs	
	Projector
Type:	Barco G60-W10 DLP laser phosphor projector
Lens:	Barco G lens 2.90-5.50
Resolution:	1,920 x 1,200 (WUXGA)
Brightness:	10,000 Lumens
Contrast ratio:	1200: 1 sequential; 6000: 1 dynamic; Extreme black: 100,000: 1
Projector connection:	2xHDMI, DVI-D, HDBaseT, 3G-SDI, VGA
Connection in venue:	VGA, HDMI at FOH, HDMI at stage
Input resolutions:	Up to 1,920 x 1,200 @ 60Hz
Dimensions:	(WxLxH) without feet: 484 x 529 x 195 mm / 19.06 x 20.83 x 7.68 inches
Weight:	Weight without lens: 22.7 kg / 50.1 lbs
	Screen
Screen type:	Front projection screen
Format:	16:09
	Distance
1,6m:	From stage floor to lower edge of the screen
17m:	From projector to screen

Cosmopolite
— SCENE OSLO —

Updated: April 2026

	Backline
Units	Equipment
Drum Kit	
	Gretsch USA Custom Silver Sparkle
1	Kick Drum 22"x14" drilled with double tamholder
1	Kick Drum 20"x14" drilled with double tamholder
1	Kick Drum 18"x14" drilled with double tamholder
1	Floor Tom 16"x16"
1	Floor Tom 14"x14"
1	Tom Tom 13"x9" with G4825 bracket
1	Tom Tom 12"x8" with G4825 bracket
1	Tom Tom 10"x8" with G4825 bracket
1	Snare drum Ludwig LM402 Supraphonic 14"x6,5"
	TAMA Starclassic Maple
1	Kick Drum 20"x18"
1	Kick Drum 18"x15"
1	Tom Tom 10"x9"
1	Tom Tom 12"x10"
1	Tom Tom 15"x13"
1	Snare drum 14"x4"
1	Snare drum 14"x5"
	Ayotte custom
1	Kick Drum 27,5" x 27,5"
1	Kick Drum 18"x18"
1	Floor tom 14"
1	Tom 10"
1	Snare drum 13,5"x5"
1	Kepelinger Stainless Steel Snare drum 14"x8"
	Cymbals:
1	Zildjian A Custom 14" Hi-Hat Cymbals
1	DL 251 48/16
1	Zildjian A Custom 20" Medium Ride Cymbal
1	Zildjian A Custom 18" Crash Cymbal
	Stands
3	Boom Cybal stand
2	Hi-hat stand
2	Cybal + tom stand
2	Tama Iron Cobra drum pedal
2	Drum throne
	Congas:
1	Tumba LP Classic Model 12"
1	Conga LP Classic Model 11"
1	Quinto LP Classic Model 10"
	Bongos:
1	LP Generation 7/8" with stand
	Timbales
2	Updated: April 2026
	Perkusjon:
1	Original Realplayer SteelBell

1	Maxtone Percussion cowbell
1	Meinl Percussion TMPTS 16" x 22" Percussion Table Stand
Bass Amps:	
Set 1	
1	AMPEG SVT CLASSIC head - with tubes
1	AMPEG 810 cabinet - with 8x10 speakers
Set 2	
1	AMPEG SVT-7 PRO Bass Head
1	AMPEG 410HE cabinet - med 4x10" speakers
1	AMPEG 15E cabinet - med 1x15" speakers
Set 3	
1	Markbass Little Mark 58R
1	Markbass Standard 104 HF 4 ohm
Guitar Amps:	
1	Fender Twin Reverb - heavy old version, with footswitch
1	Fender Twin Reverb with footswitch
1	Fender '65 Twin Reverb with footswitch
1	Fender Hot Rod Deluxe III - with footswitch
2	Roland JC-120 Jazz Chorus
1	VOX AC30
8	Guitar stand
1	Hercules GS414B guitar/bass stand
Keyboard	
1	Nord Stage 4 88 with Digital Sustain Pedal & Expression Pedal
3	Keyboard "X" stand
1	Quiklock QL642 Two-Tier Keyboardstand
Piano including tuning	
1	YAMAHA C7X GRAND PIANO (Cosmopolite Venue)
1	SAUTER RAGAZZA 122 upright piano (Belleville Venue)
5	Pianobench
DJ equipment	
1	Pioneer DJ DJM-A9 Pro DJ Mixer**
2	Pioneer DJ PLX-1000 Platespiller**

Cosmopolite
— SCENE OSLO —

Updated: April 2026

** Property of Mamounia AS

Microphone List	
Units	Equipment
	SHURE
8	SM 58
6	BETA 58
9	SM 57
3	BETA 57
2	SM 81
2	BETA 91
2	BETA 52A
	Wireless
4	ULXD2 Wireless Beta58 H51
4	Duraplex DH5T Head mic, Beige
4	Midas Heritage HD96-24
2	ULXD4D-H51 Mottager, 2 ch
	IN EAR MONITORING
4	PSM1000+, Bodypack Receiver Rechargeable
2	2 PSM1000 Dual-Channel Transmitter
	SENNHEISER
3	e603
2	e906
4	MD 421
	BEYERDYNAMIC
1	MCE 83
1	TG D57c
	AKG
2	C411 PP
2	C480
1	C214
	NEUMAN
1	DL 251 48/16
1	KM 184 mt Stereo Set
	DPA
2	4099G DC-2
1	CC4099
2	PC4099
1	UC4099
2	VC4099
2	BC4099
4	DPA Adapter: MicroLock to TA4F Mini-XLR

Cosmopolite
— SCENE OSLO —

Updated: April 2026

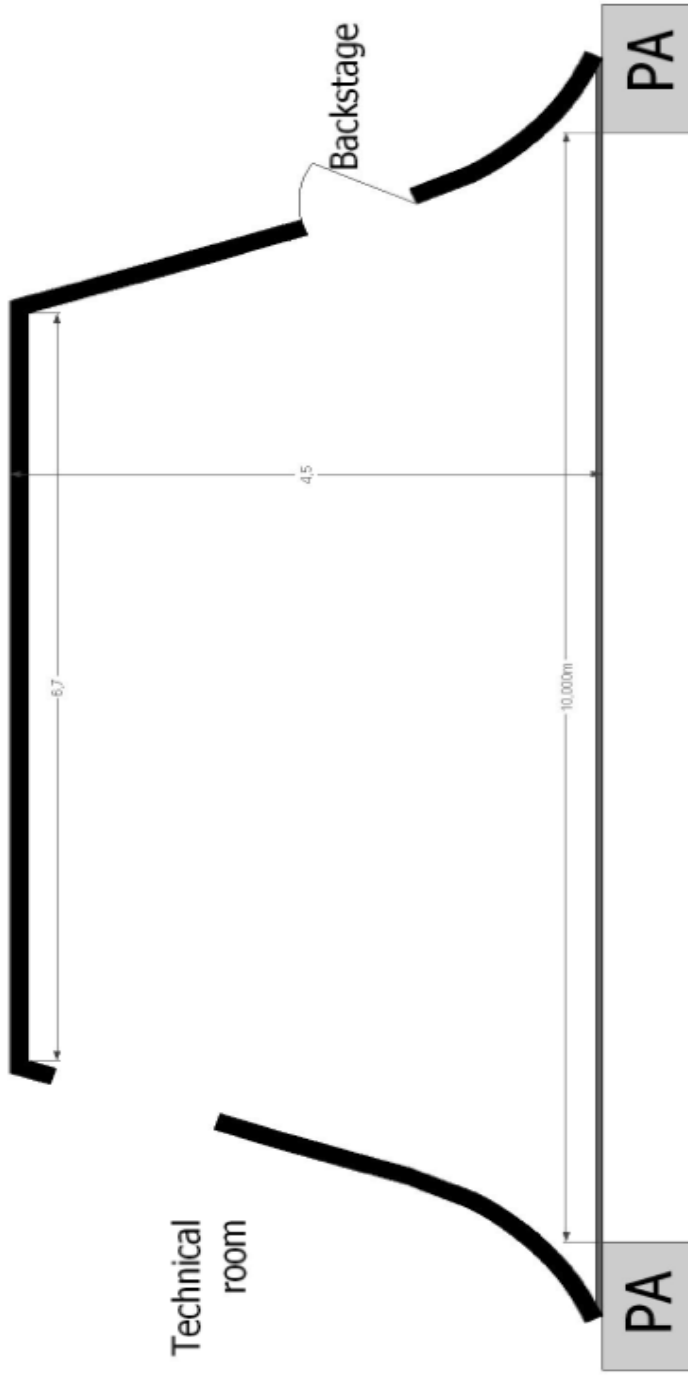
Various	
Units	Equipment
	Cables
	XLR
32	Klotz MY206 10 Meter
45	Klotz MY206 5 Meter
	JACK
2	Klotz AIS GmbH
1	Klotz Pro
1	Neutrik Silent
2	Shott tm
1	HotLine
1	Coridal
1	Midas Heritage HD96-24
1	BC25 INC
1	Professional Low Noise Instrument Cable
1	DiMarzlo
	SPEAKON
6	Klotz LY225T 15 Meter
9	Klotz LY225T 10 Meter
	LK
1	Bright Multikabel 20m 12-par LK37 PW12
2	Bright Multikabel 10m 12-par LK37 PW12
1	Bright Multikabel 5m 12-par LK37 PW12
4	8right Fanout 12xXlrF -> LK37M
	DI boxes
9	KlarkTeknik DN 100 Activ Direct INJECTION BOX
1	KlarkTeknik Stereo Activ DI BOX
1	Whirlwind HotBox Active Reference DI
2	Whirlwind Passive DI
	Stands
6	DL 251 48/16
26	High Tripod - tripod
2	Low Tripod - tripod
16	Low Stand - with round base
1	Hercules DS530BB/DS532BB/DS533BB Saxophone stand
4	Speaker stand
13	Music stands
24	Note light - with flexible neck and cord
	Stage elements
20	Nivtec stage element 1x2 m
3	Nivtec transport trolley for 6 podiums on a high edge, L. 108cm 80502

Cosmopolite
— SCENE OSLO —

Updated: April 2026

Stage Plans

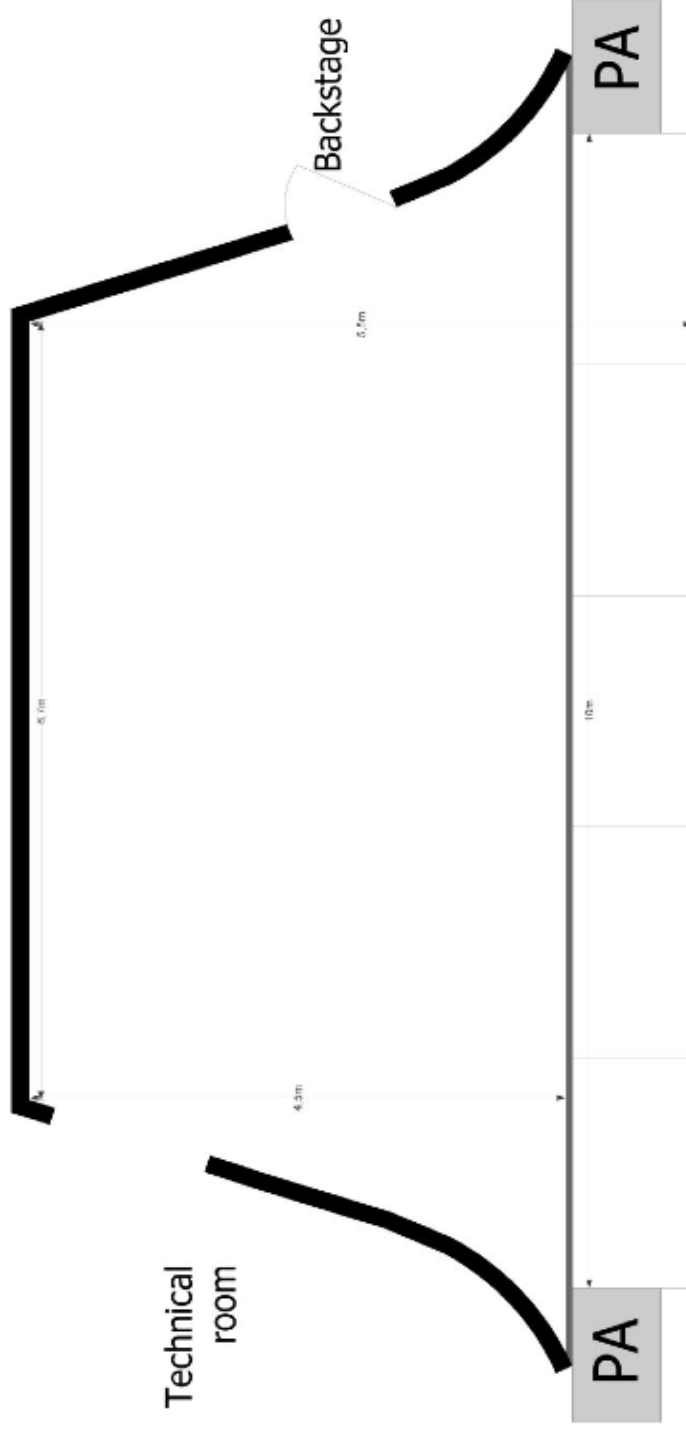
Cosmopolite
Stage Plan Main Stage
Updated: Jan 2017



Cosmopolite

Stage Plan Main Stage

Updated: Jan 2017



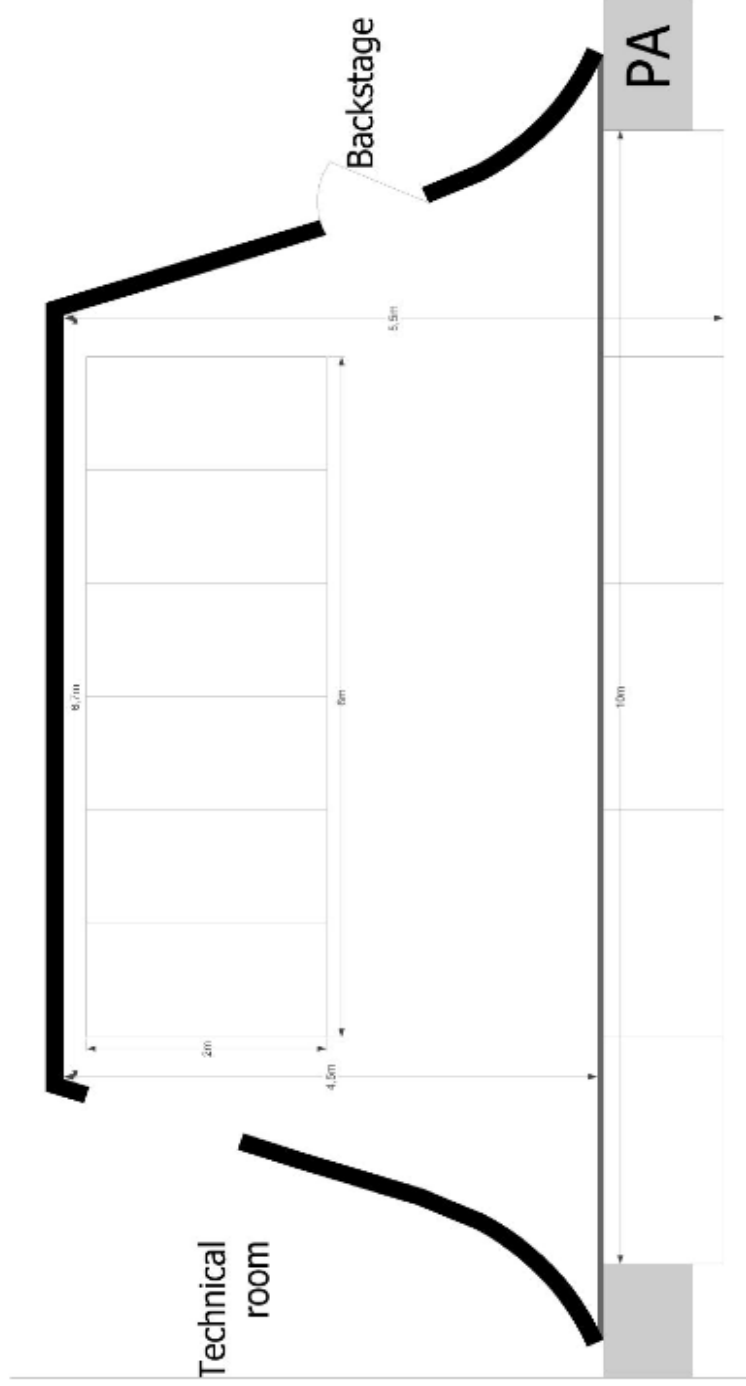
Temporary stage elements (20pcs) can be used as stage extension or as risers in different combinations.
Dimensions of a temporary stage element: 1m x 2m
Available heights: 1m (for stage extension)
0,2m (for riser)
0,4m (for riser)

Phone: (+47) 22 11 33 08/09 • e-mail: info@cosmopolite.no • www.cosmopolite.no

Cosmopolite

Stage Plan Main Stage

Updated: Jan 2017



Temporary stage elements (20pcs) can be used as stage extension or as risers in different combinations.

Dimensions of a temporary stage element: 1m x 2m

Available heights: 1m (for stage extension)

0,2m (for riser)

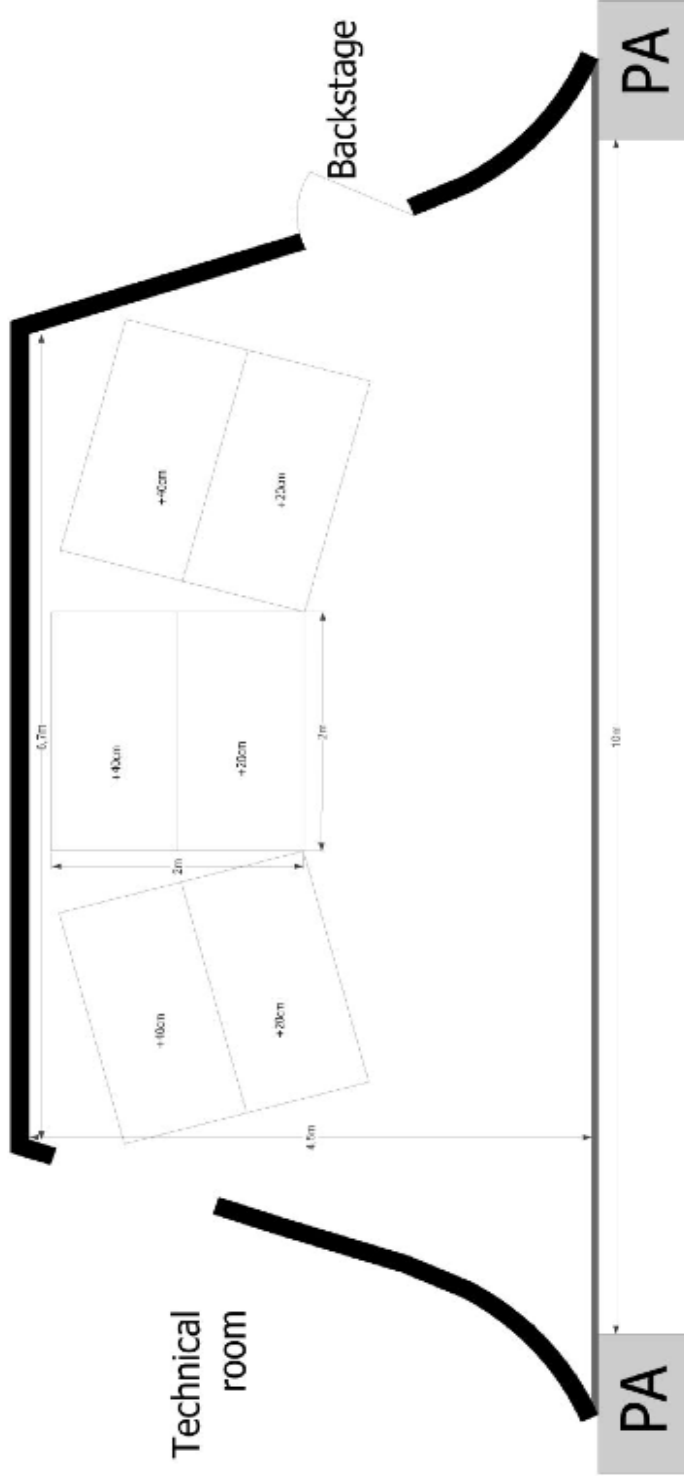
0,4m (for riser)

Phone: (+47) 22 11 33 08/09 • e-mail: info@cosmopolite.no • www.cosmopolite.no

Cosmopolite

Stage Plan Main Stage

Updated: Jan 2017



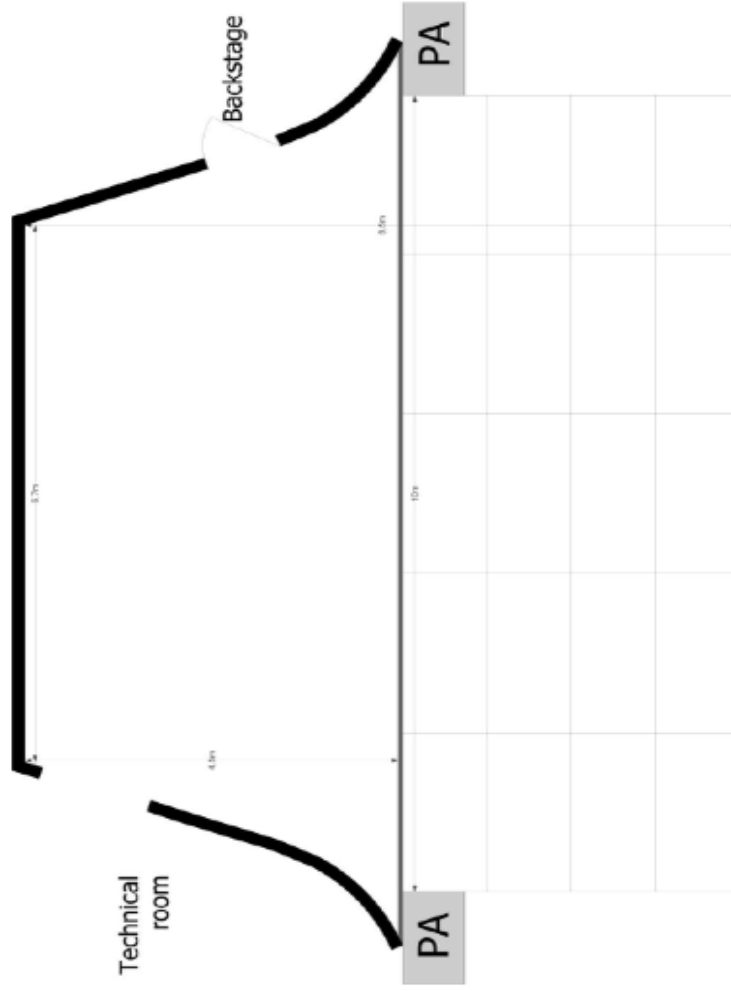
Temporary stage elements (20pcs) can be used as stage extension or as risers in different combinations.
 Dimensions of a temporary stage element: 1m x 2m
 Available heights: 1m (for stage extension)
 0,2m (for riser)
 0,4m (for riser)

Phone: (+47) 22 11 33 08/09 • e-mail: info@cosmopolite.no • www.cosmopolite.no

Cosmopolite

Stage Plan Main Stage

Updated: Jan 2017



Temporary stage elements (20pcs) can be used as stage extension or as risers in different combinations.
 Dimensions of a temporary stage element: 1m x 2m
 Available heights: 1m (for stage extension)
 0,2m (for riser)
 0,4m (for riser)

Phone: (+47) 22 11 33 08/09 • e-mail: info@cosmopolite.no • www.cosmopolite.no